



# Manual

v1.10 by  
Paul Sincock Ph.D. & Michael Allers

November 5 2015  
Game Version 1.10

Atlantic Fleet is not "Free Software".  
It contains no advertisements or in-app purchases.  
Support development by purchasing a legal copy of the game.

© 2015 by



# Table of Contents

TABLE OF CONTENTS .....	2
INTRODUCTION .....	3
1. COMBAT .....	4
1.1 Controls .....	4
1.1.1 Camera & Views - 3D World.....	4
1.1.2 Movement.....	6
1.1.3 Gunnery .....	8
1.1.4 Torpedoes.....	11
1.1.5 Air Strikes and Aircraft.....	13
1.1.6 Carrier Air Operations.....	15
1.1.7 Anti-Submarine Warfare.....	16
1.2 Tactical Map.....	20
1.3 Ship Details and Damage Report.....	22
1.4 Ending Combat.....	24
1.4.1 Disengaging .....	24
1.4.2 Withdrawing and Scuttling Ships .....	25
2. PLAYING ATLANTIC FLEET .....	26
2.1 Single Battle .....	26
2.1.1 CUSTOM BATTLE.....	27
2.2 Campaign.....	29
2.3 Battle of the Atlantic Dynamic Campaign.....	31
2.3.1 Atlantic Map .....	32
2.3.2 War Summary .....	33
2.3.3 Zones.....	35
2.3.4 Ports .....	36
2.4 Shipyard.....	38
2.5 Ship Rank and Experience.....	40
3 SINGLE BATTLE: HISTORICAL MISSIONS.....	41
3.1 Sinking Courageous .....	41
3.2 Action off Haisborough Sands .....	41
3.3 Battle of the River Plate.....	41
3.4 Sinking of Glowworm.....	41
3.5 Action off Lofoten .....	42
3.6 Sinking the Glorious .....	42
3.7 Hunt in the Western Approaches .....	42
3.8 Convoy SC-7 .....	42
3.9 Action off Plymouth.....	42
3.10 Christmas Convoy .....	43
3.11 Convoy HX-106 .....	43
3.12 Sinking Penguin .....	43
3.13 Battle of the Denmark Strait.....	43
3.14 Swordfish Attack Bismarck .....	44
3.15 Bismarck Night Action.....	44
3.16 Sinking the Bismarck.....	44
3.17 Sinking Atlantis.....	44
3.18 Kormoran versus Sydney .....	44
3.19 Sinking of Barham.....	45
3.20 Sinking Python .....	45

3.21 Convoy PQ-13 .....	45
3.22 Escorting Edinburgh .....	45
3.23 Battle of the Barents Sea .....	46
3.24 Convoy TM-1 .....	46
3.25 Les Sept Iles .....	46
3.26 Battle of the North Cape .....	46
3.27 Ile de Batz .....	47
3.28 Ile de Vierge .....	47
3.29 Action off Brittany .....	47
3.30 Action off Bergen .....	47
 4 GAME OPTIONS / HELP .....	 48
 5 APPENDICIES .....	 50
5.1 FAQ .....	50
5.2 Data .....	52
5.2.1 Torpedoes.....	52
5.2.2 Aircraft & Payloads .....	52
5.2.3 Ship Repair Times .....	53
5.3 Glossary & Abbreviations .....	54
5.4 Credits .....	55
5.5 Contact Us.....	55
5.6 Release Notes .....	56

## Introduction

Atlantic Fleet is a turn-based tactical and strategic simulation of the Battle of the Atlantic during World War II.

If this is your first time playing Atlantic Fleet, we recommend having a read through this manual and then beginning play with some Single Battles to get a feel for combat and practice gunnery skills. The Battle of the River Plate and Convoy HX-106 (playing Germany in both) Single Battles make for some excellent initial practice.

# 1. Combat

## 1.1 Controls

### 1.1.1 Camera & Views - 3D World

Tap any ship in the 3D world to focus camera on it.  
Player aircraft are automatically focused on once launched.  
Pinch to zoom.  
Drag to pan camera.  
Camera may be panned below water.



Default 3D view

#### (1) Camera Follow On/Off

On: Camera will follow all ship movement and weapons/attacks to their target.  
Off: Camera remains stationary at current position or in the case of player aircraft, remains with the aircraft.

#### (2) Tactical Map

Provides a top down overview of the current battle.  
Provides access to Options and in-game manual.  
Provides access to Special Commands for leaving combat or scuttling ships.  
See [section 1.2](#) Tactical Map for more details.

#### (3) Active Player Ship Information

Tap ship name to focus camera back to player ship.

#### (4) Target Solution

Tap ship name to focus camera on target ship.

Points camera at target in Director / Periscope View.

#### (5) Director / Periscope View

Fixes the camera to the active ship's director (lookouts) or periscope.

#### (6) Snap Bearing (Attack Angle) to Camera Angle/Current Bearing

While in Director/Periscope View:

Drag pans camera left/right only.

Pinch no longer zooms (use Zoom Toggle button instead).

Tapping target information (upper left or right) points camera at that ship (rather than moving camera to that ship as it does in 3D world).

Note that weapons still fire along bearing line when in Director / Periscope View.



Director view (periscope for submerged submarines)

#### (1) Zoom Toggle

Toggles zoom level 2x, 4x, 8x in Director/Periscope view only.

#### (2) Target Solution

Tap ship name to look at target.

#### (3) Return to 3D world view

from Director / Periscope view or Tactical Map.

#### (4) Snap Bearing (Attack Angle) to Camera Angle/Current Bearing

### 1.1.2 Movement

Atlantic Fleet is a turn-based game. Each turn, both sides move and take an action with each of their ships before the other side then takes their turn. Movement always comes before the action and only a single action is available per ship per turn. Some Special Actions during movement or using Fleet mode prevent an action that turn.

To move your ship:

1. Set telegraph (speed).
2. Set rudder angle.
3. Select a Special Action.
4. Select Single Ship or Fleet mode.
5. Tap Move.



Default 3D view (underwater)

#### (1) Telegraph

Tap upper half to increment speed.  
Tap lower half to decrease speed.



Ships have inertia. Making a dramatic change in speed will take several turns for the ship to reach the new speed. If you want to 'brake' swiftly, set telegraph to BACK.

#### (2) Rudder

Set rudder angle. Grayed out when rudder damaged.

### (3) Special Actions / Depth Rudder Angle

Red box shows current rudder angle.

Tap green Action button to cycle through special actions

1. None
2. Smoke (warship only, lays smoke screen, no attack).
3. Surface (submarine only, decreases depth by one).
4. Dive (submarine only, increases depth by one).

Smoke prevents another action for that turn by the ship laying smoke.

Smoke for 3 consecutive turns may allow the ship to Disengage.

Smoke prevents targeting if blocks line of sight.

Submarines can travel at the following depths:

1. On the Surface (can fire deck gun and torpedoes)
2. Periscope Depth (can fire torpedoes)
3. Shallow
4. Deep
5. Very Deep

Using the Surface action increments the depth of the submarine by one, so a submarine at deep depth (4) would move to shallow depth (3). A submarine at Periscope Depth (2) would surface and travel on the ocean surface itself (1).

Using the Dive action decreases the depth of the submarine by one, so a submarine at deep depth (4) would move to very deep depth (5). A submarine traveling on the ocean surface (1) would dive to periscope depth (2).

### (4) Single Ship / Fleet Movement Mode

Single Mode allows current ship to move and then attack.

Fleet Mode moves all remaining ships using the current Telegraph and Rudder settings (no Special Action applied to other ships).

Fleet Mode can quickly close distances or move merchant convoys.

Fleet Mode skips the Attack Phase of all ships moved as a group.



---

Fleet Mode can be used to quickly get into position at the start of an engagement.

---



---

Attack individually with your larger ships, then use fleet mode to quickly move any smaller ones as a group.

---



---

Fleet Mode can be used to quickly move a convoy.

---

### (5) Move

Executes movement with rudder, telegraph (speed) settings and any Special Action.

### (6) Disengage

Appears when the active ship is able to leave combat.

See [section 1.4.1](#) for more information about disengaging ships.



### 1.1.3 Gunnery

Gunnery in Atlantic Fleet is fully controlled by the player using information provided by the crew of the active ship. It is relatively easy to get started with and start landing some hits, but can be difficult to master and landing consecutive hits on a ship laying smoke at long range can be quite the challenge!

To fire guns:

1. Select type of shells/guns to fire using the Action Button.
2. Select target for firing solution.
3. Set bearing (attack direction).
4. Set gun elevation.
5. Fire guns.



Gunnery View

#### (1) Action Button / Gun Settings

(1a) Red number shows current gun bearing (attack angle).

(1b) Green number shows current gun elevation (distance).

Tap green Action button to cycle attack options:

1. AP Shells (primary guns)
2. HE Shells (primary guns)
3. AP Shells (secondary guns if applicable)
4. HE Shells (secondary guns if applicable)
5. Star Shell (illumination round available in low light conditions)



Star shells can only be fired by 8" guns or smaller.  
Star shells increase visibility range and increase Target Solution accuracy against lit targets.  
A star shell lasts for 2 turns.



Always use HE (High Explosive) shells against unarmoured targets such as Merchants, Destroyers, Corvettes and Submarines.



Always use AP shells againsts targets with armour greater than about half of the shell's calibre.

## (2) Bearing Line (Attack Direction)

Line extending from ship shows direction weapons aimed. Not all guns can fire in all directions and sometimes damage to a gun may make it unable to fire that turn. The bearing line will change colour based on whether the currently selected guns can fire in that direction:

Red                      current weapon can fire in current direction  
Gray                    current weapon cannot fire in current direction

## (3) Adjust Bearing (Attack Angle)

Adjust bearing (attack angle) until bearing line points at an enemy ship.  
Tap and drag the slider to adjust.  
Tap bearing display button **(3a)** to snap bearing to camera direction.



Tapping the bearing display (3a in previous image) will snap the bearing line to the camera's current direction. Use this to quickly bring your guns onto a target, then fine tune the angle as per (3) above.

## (4) Set Target

Tap to set closest ship intersected by aiming line as current target.  
- Target set and information displayed in upper right, see (5) below.  
- No Target: no ship was found along current attack direction.  
- Smoke: a smoke screen blocks line of sight.



Use the Tactical Map (see [Section 1.2](#)) to target a ship behind a closer ship.

## (5) Target Solution

The target solution shows information about the current target. Note that damage to directors (Spot) and RADAR decreases the accuracy of the target solution.

The following information is shown in the Target Solution:

+	Turns spent tracking target (max 5)
BB	Ship Type
Bismarck	Ship Name
25.0kn	Speed in knots
20,118	Range in yards
Elev: 15.6°	Estimated elevation of primary guns to hit target
[25.4°]	Estimated elevation of secondary guns to hit target

With each turn tracking a target, the solution becomes more accurate as the target has been observed for a longer time. For each turn spent tracking that target an additional "+" symbol is displayed next to target's name, up to a maximum of 5.



---

Remember that the Target Solution is only an estimate. Weather, time of day, visibility, smoke screens, damage to your ship's directors/RADARs and switching between targets all impact the accuracy of the solution data.

---



---

If a director/RADAR is damaged, try turning your ship to bring another director/RADAR onto the target.

---

#### **(6) Adjust Elevation (firing distance)**

Examine Target Solution (5) and Splash History (9) for estimated elevation to target and compensate for wind (if wind effects shells option is enabled).

Tap and drag the slider to adjust.

Turns red when elevation reaches the limits of gun.

Gun elevation limits vary by gun and are historically based. Gun barrels will stop moving at their limit once the slider turns red.

#### **(7) Wind Meter**

Deeper blue = stronger wind.

Wind may effect flight of shells and should be compensated for if this option is enabled.

Wind also determines the direction of smoke screens.

#### **(8) Fire**

Fires selected guns using set bearing (attack direction) and elevation.

#### **(9) Splash History**

Tap to turn on / off splash history.

Indicates whether last salvo fired at target was long, short or straddled / hit.

Automatically adjusts for movement of ships between turns.

White numbers indicate yards long or short of target.

Coloured numbers indicate elevation of last shot.

See Tactical Map for a more detailed shot history.

#### **(10) Slider sensitivity toggle**

Increases/decreases slider (3) and (6) sensitivity to assist with setting their values.



---

The splash history always indicates if and by how much you may need to adjust your elevation for the current turn.

---



---

An elevation which hit last turn may be indicated as "short" this turn if both ships have moved farther apart.

---



---

An elevation which hit last turn may be indicated as "long" this turn if both ships have moved closer together.

---

### 1.1.4 Torpedoes

Torpedoes are devastating weapons which strike a ship below the waterline and can cause extensive damage and flooding. They are much slower than other weapons and usually take multiple turns to reach their target. Note that torpedoes "de-spawn" if they overshoot their target and there are no other targets that could possibly be hit. Torpedo speed and range vary based on type (submarine, surface ship or aerial) and navy and are historically based. See Appendix 5.2.1.

To make a torpedo attack:

1. Select torpedoes using the Action Button.
2. Select target for firing solution.
3. Set bearing (attack direction).
4. Mark one or more torpedo bearings.
5. Fire torpedoes.



**Torpedo Attack View**

#### (1) Action Button / Torpedo Settings

(1a) Red number shows current bearing (attack angle).

(1b) Green number shows estimated range to target based on the Target Solution.

Range indicator turns red if range shorter than arming distance (~1000 yards) or farther than torpedo range.

Tap green Action button to cycle additional attack options.

## (2) Bearing Line (Attack Direction)

Line extending from ship shows direction weapons aimed. Not all torpedoes can fire in all directions and sometimes damage to a torpedo room or launcher may make it unable to fire that turn.

Red	current weapon can fire in current direction
Gray	current weapon cannot fire in current direction
Green	marked direction for a torpedo salvo

## (3) Adjust Bearing (Attack Angle)

Adjust bearing (attack angle) until bearing line points at an enemy ship.

Tap and drag the slider to adjust.

Tap bearing display button **(3a)** to snap bearing to camera direction.



Tapping the bearing display (3a in previous image) will snap the bearing line to the camera's current direction. Use this to quickly bring your guns onto a target, then fine tune the angle as per (3) above.

## (4) Set Target

Tap to set closest ship intersected by bearing line as current target.

Use Tactical Map to target ships behind others.

Target information displayed in upper right.

"No Target" - no ship found on current bearing.

"Smoke" - a smoke screen blocks line of sight.



Use the Tactical Map (see [section 1.2](#)) to target a ship behind a closer ship.

## (5) Target Solution

The target solution shows information about the current target. Note that damage to directors (Spot) and RADAR decreases the accuracy of the target solution.

The following explains the information shown in the Target Solution:

+	Turns spent tracking target (max 5), zero in this example
MS	Ship Type
Type C3	Ship Name
17.3kn	Speed in knots
5,034	Range in yards.
Torp. 350.3°	Estimated bearing to fire torpedo in order to hit target

With each turn tracking a target, the solution becomes more accurate as the target has been observed for a longer time. For each turn spent tracking that target a "+" symbol is displayed next to the target's name up to a maximum of 5.



Remember that the Target Solution is only an estimate. Weather, time of day, visibility, smoke screens, damage to your ship's directors/RADARs and switching between targets all impact the accuracy of the solution data.



If a director/RADAR is damaged, try turning your ship to bring another director/RADAR onto the target.

### (6) Mark Torpedo Bearing

Shows the number of torpedoes able to fire along current bearing.

Tap to set bearing for a torpedo to be fired.

May be tapped multiple times (adjusting bearing in between) to set a spread of torpedoes.

Once a torpedo bearing has been marked, it cannot be unmarked. The only way not to fire along a marked bearing is to not take a torpedo attack action this turn.

### (7) Fire

Fires torpedoes along each of the marked bearings.

### (8) Slider sensitivity toggle

Increases/decreases slider (3) to assist with setting its value.

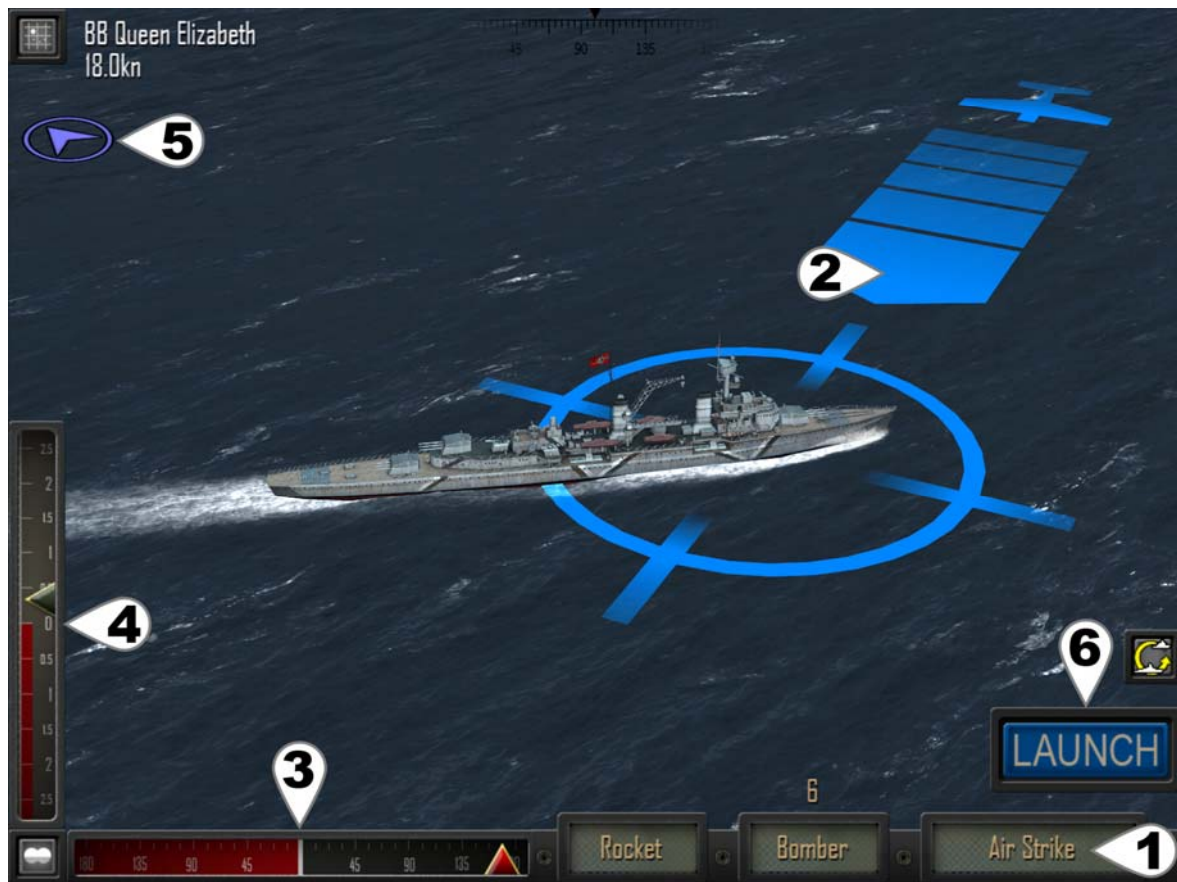
## 1.1.5 Air Strikes and Aircraft

Land-based air strikes may be performed by any ship.

Carrier air strikes may only be performed by carrier launching the aircraft and require multiple turns to set up as outlined in [section 1.1.6](#).

To make an air strike attack:

1. Select Air Strike using the Action Button.
2. Tap target ship.
3. Set attack point along length of ship.
4. Set attack direction.
5. Launch Aircraft.
6. Dive/Drop Payload.



Aircraft Attack View

### **(1) Action Button / Air Attack Settings (land-based aircraft)**

Left panels show aircraft load out and type.

Number above aircraft type = number available.

Tap green Action button to cycle through attack options.

### **(2) Aircraft Attack Marker**

Shows the angle and position of the incoming air attack.

Tap enemy ship to place marker over it.

Adjust angle and position using the Adjust Attack Angle and Adjust

Attack position sliders as mentioned above.



---

If the active ship already has a target, simply tap the Target Solution to set the attack marker onto that target or use the Tactical Map to target any ship.

---

### **(3) Adjust Attack Location**

Tap and drag the slider to adjust point along length of target ship which aircraft will attack.



---

For aerial torpedo attacks, set the attack location 0.5-1.5 ship lengths ahead of the target, depending on speed, in order to "lead" your attack.

---

### **(4) Adjust Attack Angle**

Tap and drag the slider to adjust angle from which aircraft will attack.



---

Try to find an attack angle that minimises your aircraft's exposure to anti-aircraft fire. Avoid passing close to any other enemy ships.

---

### **(5) Wind Meter**

Deeper blue = stronger wind.

Wind always effects payloads dropped by aircraft and should be compensated for.

### **(6) Launch Air Strike**

Automatically focuses camera onto your incoming aircraft.

Once the aircraft is in the air:

#### **Dive**

Puts attacking aircraft into a dive for an attack run. Not all aircraft need to dive before releasing their payload.

#### **Release Payload**

Payloads are historical and not all aircraft can carry all payloads.

See Appendix 4.2.2 for aircraft and payloads available.

#### **Cancel Air Strike**

"X" button in the top right corner will cancel an air strike. An air strike that is cancelled or fails to drop payload is available for attack again on a subsequent turn.



### 1.1.6 Carrier Air Operations

Unlike land-based aircraft, carrier aircraft are not already in the air at the start of combat and are launched, attack and are recovered as part of air operations.

Air operations are suspended under the following conditions:

- 1) carrier is on fire
- 2) flight deck is damaged or destroyed

Aircraft carriers can perform air operations in 4 steps.

Each step requires a full turn by tapping the "Launch" Button.



**1) Ready wing**, selecting aircraft type and payload.

Moves wing from hangar to flight deck.

Hanger (4) = Wing of 4 Bombers currently in hangar.



**1b) Unready wing** (optional).

Returns a wing on the flight deck back to hangar.

Flight Deck (4) = Wing of 4 Bombers currently on flight deck.



**2) Launch wing**

Moves wing from flight deck to air.

Flight Deck (4) = Wing of 4 Bombers currently on flight deck.



**3) Air Strikes**

Attack target as described above in [section 1.1.5](#). One air strike per turn.

4/4 = air strikes available / wing size



#### **4) Recover wing**

Moves wing in air back to hangar.

0/4 = air strikes available / wing size.

A wing may be recovered prior to all aircraft being spent.

Requires the flight deck to be clear.

Only one wing may be on the flight deck at any time.

Air Ops will be suspended due to fires or excessive damage, but aircraft already in the air may continue to attack.

Only the carrier launching aircraft can perform attacks with those aircraft.

All aircraft carriers carry a Fighter and Bomber wing.

Wing Size:

4 Escort Carrier

8 Aircraft Carrier

#### **Combat Air Patrols**

Any unused carrier aircraft in the air will automatically defend against enemy aircraft.

Fighters with no payload are best at shooting down enemy aircraft.

Fighters with a payload have a moderate chance.

Bombers have the lowest chance of shooting down enemy aircraft.

### **1.1.7 Anti-Submarine Warfare**

Enemy submarines can be sunk by aircraft, gunfire, torpedoes as well as a variety of specialised anti-submarine weapons: depth charges, hedgehog and squid. Anti-submarine weapons are only available on Destroyers (DD) and Corvettes (DC). These ship types are called escorts.

Attacking submarines with gunfire, torpedoes or aircraft is performed as outlined in [section 1.1.3](#), [section 1.1.4](#), [section 1.1.5](#) above. With the following exceptions:

1) A submerged submarine cannot be targeted in the 3D world. Instead, open the tactical map and target the sonar contact. This means that the attacking ship must have working sonar equipped.

2) Torpedoes fired at a submerged submarine automatically have their running depth adjusted to be deeper. However torpedoes cannot run deeper than periscope depth.

#### **Depth Charges**

Depth charges are explosives dropped or fired from a surface vessel which explode at a set depth. They have a relatively small "kill radius" meaning one has to explode quite close to a submarine in order to damage or sink it. This "kill radius" decreases with depth due to the increase in water pressure. The depth to explode is automatically set based on the nearest enemy submarine.

To make an anti-submarine attack using Depth Charges:

1. Move over the enemy submarine, placing it a little behind the attacking vessel.
2. Select Depth Charge using the Action Button.
3. Tap FIRE to release a grid of depth charges.



### Depth Charge Attack

#### (1) Action Button

Tap to cycle to Depth Charge.

#### (2) Sonar Contact Marker

Sonar contact showing position of enemy submarine.

#### (3) FIRE

Drops a grid pattern of depth charges behind the ship. Depth charges automatically explode around the depth of the nearest enemy submarine.

#### Hedgehog - Allies Only

Hedgehog is a forward firing ring of mortars which explode only on contact. This weapon was developed later in the war by the allies and is available on Destroyers (DD) and Corvettes (DC).

#### Squid - Allies Only

Squid fires as a staggered ring of mortars which explode above and below the desired depth to generate a massive shockwave with a large "kill radius". Like depth charges, this "kill radius" also decreases with depth due to the increase in water pressure. This weapon was developed later in the war by the allies and is available on some Corvettes (DC). The depth to explode is automatically set based on the nearest enemy submarine.

To make an anti-submarine attack using Hedgehog or Squid:

1. Move towards the enemy submarine.
2. Line up the red circle (shows where weapon will fall) onto the green sonar contact marker.
3. Select Hedgehog or Squid using the Action Button.
4. Tap FIRE to fire the mortars.



### Hedgehog (or Squid) Attack

#### (1) Action Button

Tap to cycle to Hedgehog (or Squid).

#### (2) Anti-Submarine Weapon Zone

Red area indicates hedgehog (or Squid) deployment zone.

#### (3) Sonar Contact Marker

Sonar contact showing position of enemy submarine.

Note the overlap with anti-submarine weapon deployment zone.

#### (4) FIRE

Fires the anti-submarine weapon into the deployment zone.

Hedgehog mortars explode on contact with a submarine.

Squid mortars automatically explode at the depth of the nearest enemy submarine.



Diving deep can help protect against Depth Charges and Squid, but the increased water pressure will crush your submarine very quickly if it takes a hit!



---

Never approach a submarine at periscope depth from the front! It could fire torpedoes.

---



---

Fire guns at a periscope and attempt to drive a submarine deeper before closing in to attack. At longer range the submarine might disengage but at closer range there is a much better chance of establishing strong sonar contact to prevent it escaping.

---

### **Sonar Disruption**

Underwater explosions from depth charges or squid disrupt the water around them and interfere with sonar. This gives the submarine being attacked a chance to break sonar contact and automatically disengage next turn.

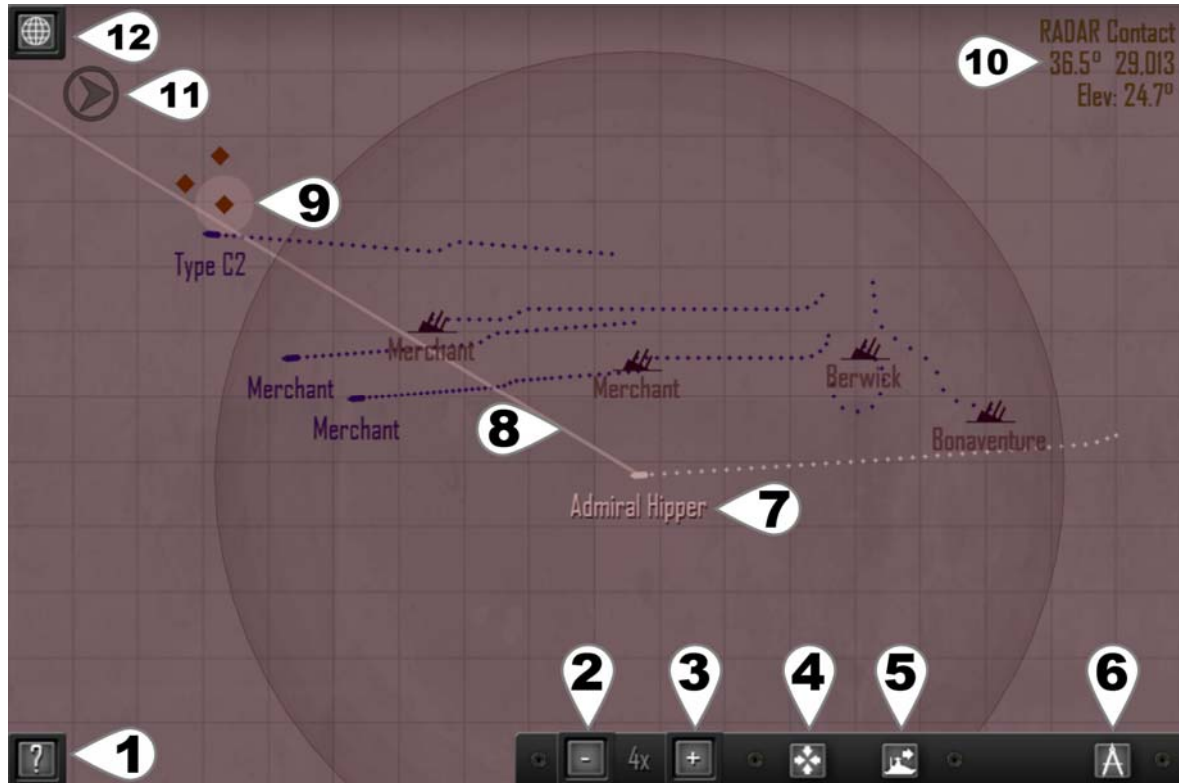
## 1.2 Tactical Map

The Tactical Map provides an overview of the battle and can be used to set targets, navigate between various ships and view a detailed history of up to the last 6 shots fired.

Tap any ship to select it.

Selecting a ship will set it as the target of the currently active ship.

When in attack phase (after movement) white bearing line shows attack direction to target.



**Tactical Map View**  
(red lighting due to combat occurring at night)

### Icon Colours:

White	Active player ship for the current turn
Blue	Allied ship
Red	Axis ship
Gold	RADAR contact
Green	Sonar contact (or aircraft spotted submarine)
Gray	Disengaged ship
Black	Sunk ship

### (1) Help, Options and Special Commands Menu

See [section 1.4.2](#) below.

### (2, 3) Zoom Map Out/In

Zooms map between 1x and 128x.

### (4) Centre Map

Places currently selected ship in centre of map.



### **(5) Go To Ship**

Return to 3D world with camera focused on currently selected ship.

### **(6) Shot History**

Toggle: Off / Primary Guns / Secondary Guns

Displays up to the last 6 shots fired by the active ship.

Shows firing position and salvo hit location.

Shots are numbered and their corresponding elevations shown.

Shots marked with an "X" scored at least one hit by the salvo.



---

Shot history is the most accurate data for previous shots. Comparing the length of the shots to their corresponding elevation and examining the relative positions of your ship and a target can give a very good idea on how to land the next shot.

---



---

Shot history is not impacted by smoke and can be used to successfully land hits through smoke screens and against fleeing ships.

---

### **(7) Active Ship**

Player ship currently taking the turn is shown in white.

### **(8) Bearing Line (Attack direction)**

The bearing line from the 3D world is superimposed on the map.

Not available during movement mode.

### **(9) Selected Ship**

Tapping any ship or contact icon on the map will select that ship.

Selecting a ship sets it as the target for the player ship.

### **(10) Target Solution**

Target solution information for the player ship's current target.

### **(11) Wind Meter**

Displays direction of wind.

### **(12) Exit Tactical Map**

Tap to return to 3D view.

## 1.3 Ship Details and Damage Report

Tap the ship currently targeted by the camera to open the damage report.  
Not available for enemy ships if No Enemy Damage Reports option is on.



### Damage Report and Ship Information

#### (1) Ship Information

Displays ship name, class, experience rank and speed (far right).  
Experience Rank Display shows a 1-5 star rating of rank as well as gray/green bar showing progress to next rank.

#### (2) Ship Statistics

Displays ship weapons, armour, displacement, maximum speed and how many aircraft it carries.

#### (3) Ship Ammunition

Shows the remaining number of each weapon type for the ship. Aircraft and anti-submarine weapons are always available as long as the flight deck or anti-submarine weapons are not damaged.

(4) **Toggle** subsystem damage report on/off.

#### (5) Subsystem Damage Report

Subsystems of a ship may be knocked out for several turns or destroyed. Damage control crews automatically attempt to repair each damaged subsystem each turn. However some specific subsystems as well as destroyed subsystems cannot be repaired.

Gray	No damage - system is operational.
Yellow	Lightly damaged.
Orange	Moderately Damaged.
Red	Destroyed, cannot be repaired. (repair in port for Battle of the Atlantic Campaigns)

The effects of subsystem damage are outlined below:

### **Propulsion**

Decreased speed of ship. Hits to the rear (propellers and shafts), middle (engine room and boilers) and funnel of a ship can impact propulsion. Cannot be destroyed.

### **Steering**

Cannot adjust rudder during movement. Cannot be destroyed.

### **Pumps**

Greatly increases flooding and chance to sink. Cannot be repaired.

### **Main Spot / RADAR**

Decreases accuracy against targets in any direction.

### **Fore Spot / RADAR**

Decreases accuracy against targets forward of the ship.

### **Aft Spot / RADAR**

Decreases accuracy against targets to the rear of ship.

### **Sonar**

Cannot detect submerged submarines.  
Submarines can no longer detect ships if below periscope depth.

### **Aircraft**

Suspends carrier air operations.

### **Turret / Deck Gun**

Gun can no longer move, reload or fire.

### **Secondary Guns (port and starboard)**

All secondary guns on damaged side no longer move, reload or fire.

### **Torpedo (port, starboard, fore and aft)**

Torpedo launcher (or room) can no longer reload or fire.

### **ASW (Anti-Submarine Weaponry)**

Cannot deploy depth charges, hedgehog or squid.

### **Pressure Hull (submarines only)**

The amount of damage the hull of a submarine has taken. Cannot be repaired.

### **Anti-Aircraft**

Decreased effectiveness of shooting down enemy aircraft. Cannot be repaired in battle.

## 1.4 Ending Combat

Combat automatically ends when:

- all player ships sunk, scuttled or disengaged
- all enemy ships sunk, scuttled or disengaged
- player withdraws all ships from combat

### 1.4.1 Disengaging

Disengaging allows a vessel to leave combat. However disengaging is not automatic and certain conditions must be met for a vessel to leave combat as outlined below.

By default, enemy ships cannot disengage. There is an option "Enemy Ships Can Disengage" to enable this, see [Section 4](#) for more details. Turning this option on greatly increases the tactical complexity of the game.

A button allowing a ship or submarine to disengage will appear during the movement phase when the following criteria are met:

#### Warships:

- must lay smoke for at least 3 consecutive turns
- be moving at least 10 knots
- be > 25,000 yards from the closest active\* hostile vessel
- at > 40,000 yards enemy warships will automatically leave combat

#### Submarines:

- may disengage whenever > 5,000 yards from the closest active\* hostile vessel
- depth charges and squid disrupt sonar increasing the chance for submarines to disengage after an attack

#### Merchants:

- cannot disengage
- may leave combat by Withdrawing as outlined in [Section 1.4.2](#)
- moving > 40,000 yards from an enemy will forcing the enemy to disengage

\* Note that an "active" hostile vessel is one that is currently engaged in combat. Namely it is not sinking or capsizing and not laying smoke/attempting to disengage itself. Merchant ships are not considered to be "active" as they possess no weapon systems in the game, aside from anti-aircraft guns.



---

Deliberately damage a target's propulsion by hitting the engine room/boilers, propellers and shafts in order to delay or prevent it from being able to disengage.

---



---

In version 1.10, disengaging enemy ships now defend themselves and sometimes stop laying smoke/disengaging in order to attack back.

---



---

Forcing all enemy ships to disengage allows you to leave combat immediately by Withdrawing, as outlined in Section 1.4.2.

---

## 1.4.2 Withdrawing and Scuttling Ships

From the tactical map you can enter the Options/Help and Special Commands menu by tapping on the "?" button in the bottom left.



**Options/Help and Special Commands Menu (accessed from the Tactical Map)**

### **Options/Help**

Opens the options page and in-game documentation.

### **Withdraw/Sink merchants and withdraw**

This command appears only when no enemy ships can attack. Either they are merchants, are warships laying smoke and in the process of disengaging or are sunk, scuttled or have disengaged.

Withdrawing all ships immediately ends combat.

"Sink merchants and withdraw" appears in Battle of the Atlantic game mode only and allows you to withdraw from combat, counting any remaining unescorted merchant ships as sunk.

### **Scuttle "Current Ship"/SCUTTLE all ships**

These commands are always available and will deliberately sink either the current active ship or all player controlled ships in combat.

\*\*\* WARNING: Scuttling ships in Campaign and Battle of the Atlantic modes removes those ships from your fleet. Lost ships may be re-purchased in Campaign mode, but are lost permanently in Battle of the Atlantic mode. \*\*\*

## 2. Playing Atlantic Fleet

Atlantic Fleet is a turn based naval tactical and strategic simulation depicting the tonnage war of the Battle of the Atlantic.

Three game modes are available:

1. Single Battles (including Custom Battles and Training Missions).
2. Campaign
3. Battle of the Atlantic

In version 1.07, a series of Training Missions have also been added to assist new players with learning the various aspects of the game.

### 2.1 Single Battle

Single Battles are stand alone historical scenarios where player ships do not acquire experience or ranks and Renown is not earned.

Aside from CUSTOM BATTLE, all mission parameters are preset with the exception of choosing which navy to play.

1. Tap mission of interest to select it.
2. Tap Next.
3. Tap Navy flag to select faction to play.
4. Tap Attack to begin mission.





## Single Mission Selection

### (1) Mission List

Tap and drag to scroll through missions.  
Tap a mission to select it.

### (2) Mission Briefing

### (3) Mission Location

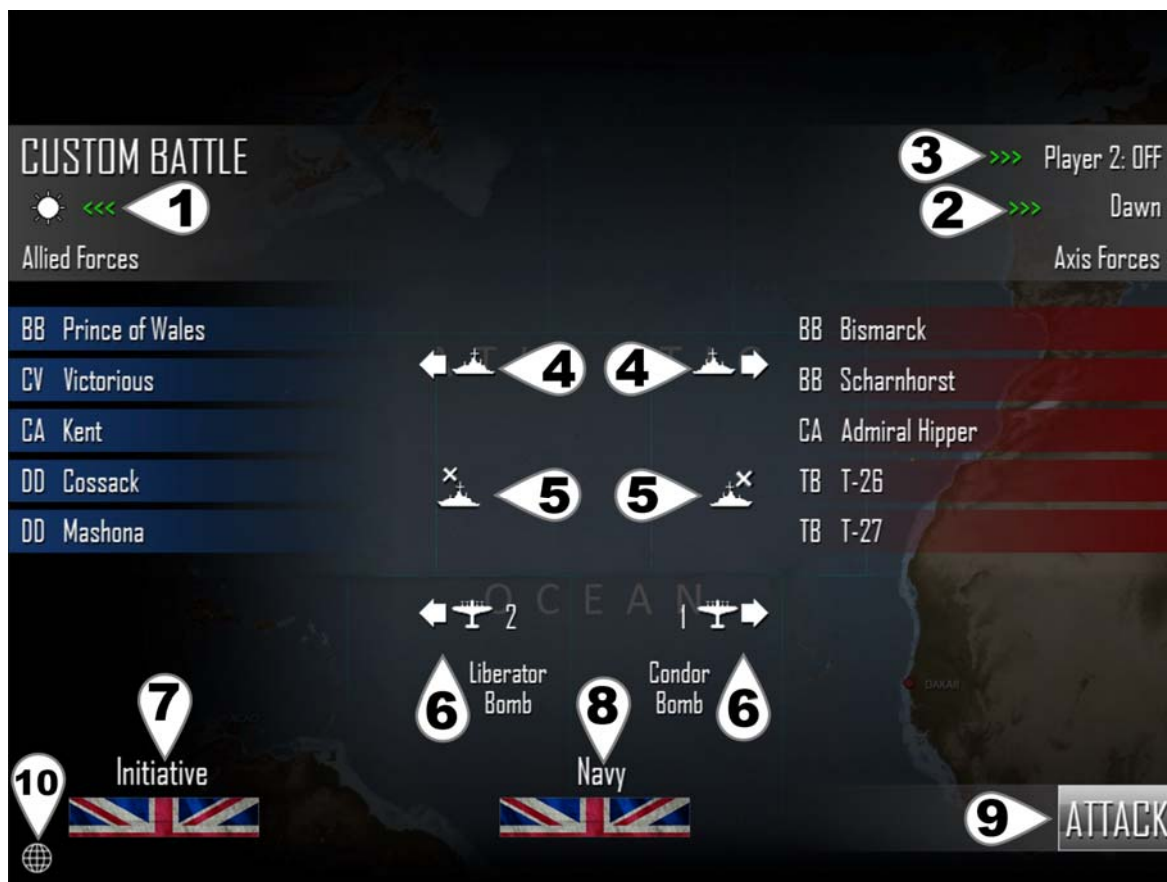
### (4) Go to ship Listing

Here you can see the lists of ships for the battle, weather and time conditions.  
For Historical Missions, only the Navy being played and setting Player 2 on/off can be adjusted.

### (5) Back to Main Menu

## 2.1.1 CUSTOM BATTLE

The first Single Mission is a scenario editor for setting up to 10 vs 10 ships in battle.  
Adjust weather, time, ships on each side and number of land-based aircraft (aircraft type payload assigned randomly).  
Select initiative (which navy acts first) and a navy to control.  
AI may be disabled to allow multiplayer on the same device.



CUSTOM BATTLE Editor

**(1) Weather**

Tap to cycle to desired weather conditions for the battle.

**(2) Time**

Tap to cycle to desired time of day for the battle.

**(3) Toggle AI / Player 2**

Tap to toggle Player 2 on or off.

Both players use the same device.

**(4) Add a ship from each faction's Shipyard to the battle.**

See Shipyard for more information.

Duplicates of the same ship are allowed.

**(5) Remove** highlighted (yellow) ships from corresponding navy's list.

Tap listed ships to toggle highlight.

**(6) Toggle** number of land-based aircraft available per navy (max 10) and set payload.

Aircraft type and payload can be toggled by tapping the textual description.

Aircraft not available in combat if time set to Night.

**(7) Set Initiative**

Tap to assign which navy takes the first turn.

**(8) Set Navy**

Tap to assign which navy to play as.

**(9) Begin the Battle**

**(10) Return** to Mission Selection List.

## 2.2 Campaign

In Campaign mode, you'll take on the role of the Admiral of a Task Force. Your goal will be to sink enemy shipping and use the Renown earned to buy ships and build up your fleet. However your resources are limited. There are over 2 million Renown points to be earned per campaign which makes building up your fleet fairly easy, but any ships lost will have to be re-purchased and battles become very difficult in the late stages. Thus it is possible to run out of Renown and fail a campaign.

Campaigns are a series of 50 missions increasing in difficulty and are saved separately for each navy. Games are saved automatically at the end of each battle and whenever purchasing a new ship or releasing a ship from command.

### Goal

Sink enemy shipping to earn Renown points in order to purchase more and better ships as well as replace those lost in action.

### Rules

Maximum player fleet size is 10 ships.

Maximum player ships in battle is 3.

Player ships sunk are removed from fleet (may be re-purchased).

Cannot own duplicates of the same ship.

Renown is earned for warships, submarines and merchants sunk.

Earn ★★★ in zone 50 to win the campaign.

Scores:

- ★ at least 33% of tonnage sunk for that zone.
- ★★ at least 66% of tonnage sunk for that zone.
- ★★★ 100% of tonnage sunk for that zone.

Repeating a zone will generate Renown only if the outcome is greater than the current highest previous attempt.

Due to limited Renown it is possible to lose a campaign.



---

Don't spend all your Renown on powerful expensive ships too early! If they are sunk the lost Renown can leave you in a very bad situation. Always keep enough Renown in reserve to field at least 3 destroyers or submarines at a time.

---

Initiative, weather, zone locations and time of battle are randomly assigned to each zone at the creation of a new campaign. Land-based air strikes are available in zones with air cover.

The Campaign Mission list is similar to Single Battles and displays the current best score ranging from ★ to ★★★.

Tap a mission to begin it.

At least ★ must be earned on a mission to unlock the next mission and remember;

Renown is only earned if a mission score is greater than any previous best score.



### Campaign Mission

#### (1) Player Fleet

Lists player owned ships.

Highlighted (blue or red) ships are readied to enter the next battle.

Player fleet is listed on the side corresponding to the faction being played.

Tap Player Ships to toggle Highlights:

Gray	Unassigned
Blue	Allied ship assigned to battle
Red	Axis ship assigned to battle
Yellow	Marked for removal from fleet

Up to 3 player ships can be assigned to enter battle.

#### (2) Shipyard

Enter the Shipyard to purchase new ships with Renown points.

See Shipyard for more information.

#### (3) Examine Ships

Displays ship statistics.

On the ship information panel:

>>> Examine next ship.

<<< Examine previous ship.

Tap anywhere on screen to exit ship information panel.

#### **(4) Remove Ships**

Removes highlighted (yellow) ship/s from player navy.  
Tap listed ships to toggle highlight.  
Released ships may be re-purchased.

#### **(5) Battle Location**

The location of the battle influences which navies might have land-based air attacks available. A location must be near land occupied by a particular faction for a chance to have land-based air attacks during the battle.

#### **(6) Enemy Ship List**

Enemy ships listed on the side corresponding to the faction not being played.

#### **(7) Attack**

Begin the battle.  
At least one player ship must be highlighted for battle (blue or red).  
Tap player ships in list to toggle highlights.

#### **(8) Back to Campaign mission list**



---

While it might be easy to earn a lot of Renown in the early to middle stages of the campaign, beware! The later missions can become extremely hard and you may find yourself replacing a lot of sunk ships.

---

## **2.3 Battle of the Atlantic Dynamic Campaign**

Turn-based tactical and strategic simulation of the tonnage war that was the Battle of the Atlantic during World War II. Your goal is to protect (or destroy) merchant shipping as it brings valuable war materials to Britain across the Atlantic. Unlike the regular Campaigns, the Battle of the Atlantic is fully dynamic and evolves over time into a very unique experience. Be prepared to think, be adaptable and make sacrifices to keep the war in your favour.

Campaigns for each navy are saved separately. Games are saved automatically at the end of each battle and whenever purchasing a new ship or releasing a ship from command.

### **Goal**

Sink enemy warships and submarines to earn Renown points in order to purchase more and better ships.

Allies - Protect merchants carrying war materials across Atlantic.

Axis - Sink allied merchants preventing delivery of war materials.

### **Rules**

Maximum player fleet size is 20 ships (option available to increase this to 30).

Maximum player ships in battle is 10.

Any ship sunk is permanently removed from campaign.

Cannot own duplicates of the same ship.

Renown earned for warships and submarines sunk (not merchants).

Merchant ships sunk do not provide Renown points, but instead go to the tonnage tally (see War Summary).

Land-based air strikes sometimes available in zones with air cover.

### 2.3.1 Atlantic Map

Tap in the centre of a zone to manage it, see Zones below.

Tap at edges of zones (or on land areas) and Drag to pan around map.



#### (1) War Summary Bar

Indicates the balance of the tonnage war.

Allies - Blue

Axis - Red

#### (2) War Summary

See below for more details.

#### (3) Display all zone names and location of ports/supply vessels.

Zones with a red tanker symbol contain supply vessels. Ending the turn in this zone will automatically rearm ship (Axis only).

#### (4) Show allied convoy routes.

Darker blue indicates increased convoy traffic through zone.

Convoy routes and frequency change and are historically based.



Spread your forces thin to cover as many shipping routes as possible, but be prepared to react to and defend against heavier surface ships if and when they appear.



### **(5) Zone Weather**

Ranges from clear to snow storms.

Follows meteorological patterns of the Atlantic with Westerlies, Trade Winds and seasonal changes.

Poor weather decreases detection of enemy ships in the same zone.

Impacts maximum visibility for combat in that zone.



---

Use bad weather as cover to move about the map with less chance of detection.

---

### **(6) Show number of player warships and submarines in zone.**

Default view for every turn.

Shows the number of player warships and submarines in each zone.

Warships and submarines act independently in combat. If an encounter occurs in a zone containing both warships and submarines, either all the warships or all the submarines will engage the enemy.

Enemy warships or submarines encountered in a battle or from an event during the last turn are shown in red (Axis) or blue (Allies) to indicate their activity in that zone.

### **(7) Next Turn**

Each campaign turn = ~3.5 days (8 turns per month).

After each player turn the following happens:

- Enemy ships move.
- Combat may occur in zones containing warships/submarines of both factions.
- Events (non-merchants may be damaged, but not sunk by events).

**Events** include: attacks on unescorted merchants, submarine attacks on unescorted warships, air attacks against shipping and naval bases.

Merchant tonnage sunk during events count towards the tonnage tally of the war (see War Summary below).

Warships and submarines cannot be sunk by events, but they can be damaged. This damage is permanent until repaired in a port.

### **(8) Return to Main Menu**

## **2.3.2 War Summary**

Shows overall status of the tonnage war, all warship and merchant tonnage sunk to date and a roster of all player ships and their locations.

Since merchant vessels sunk in combat (or events) do not earn Renown, their tonnage is applied to the War Summary instead.

Britain may come to terms from mid-late 1940 onwards where war materials become crucial for her to win the "Battle of Britain". Going forward, if at least 300,000 tons of allied merchants per month is consistently sunk, Britain may withdraw from the war and Germany wins the Battle of the Atlantic. 700,000 tons required once the United States enters war.

Britain may win the Battle of the Atlantic if over 150,000 tons of Axis Naval shipping is sunk and Axis forces fail to sink at least one third their current goal (100,000 tons before the US enters the war and ~230,000 tons after).

In the case of a draw, the Allies will eventually launch the Normandy invasion and ultimately win that game since enough war materials have arrived to re-take Europe.

Once the Battle of the Atlantic is ended, a victory (or defeat) screen is shown and the campaign can not progress past that turn as it is over.



### War Summary View

#### (1) Navy Roster

Lists all player ships, damage status and their location.  
Tap a ship to select it.

#### (2) Examine Selected Ship

Displays ship statistics.

On the ship information panel:

>>> Examine next ship.

<<< Examine previous ship.

Tap anywhere on screen to exit ship information panel.

#### (3) Go to zone of selected ship

Opens the zone containing the currently selected ship.

#### (4) Sunk Ships Roster

Displays a list of all naval vessels (not merchants) lost by each side in the conflict to date.

#### (5) Return to Atlantic Map

### 2.3.3 Zones

Tap the centre of a zone on the Atlantic Map manage it.  
Tap again to open the Port if that zone contains them (see Ports below).  
Zones adjacent to the current zones are also highlighted.

#### Moving Ships

To move ships between zones:

1. Tap ships on list to toggle highlight (blue for allies, red for axis).
2. Tap an adjacent zone (large blue circles) to move highlighted ships into it.
3. Adjacent zone now becomes the managed zone and ships are moved into it.

Ships may only move once per turn.

Ships that have moved this turn cannot be highlighted and are listed in dark gray.



#### Zone Management

##### (1) War Summary Bar

Indicates the balance of the tonnage war.

Allies - Blue

Axis - Red

##### (2) Examine Ships

Displays ship statistics.

On the ship information panel:

>>> Examine next ship in zone.

<<< Examine previous ship in zone.

Tap anywhere on screen to exit the ship information panel.

### (3) Select / Deselect All

Toggle to select all or deselect all ships in zone.

Ships that have already moved this turn cannot be selected.

(4, 5, 6, 7) See [section 2.3.1](#) on Atlantic Map for a description of these.

### (8) Next Turn

Each campaign turn = ~3.5 days (8 turns per month).

After each player turn the following happens:

- Enemy ships move.
- Combat may occur in zones containing warships/submarines of both factions.
- Events (non-merchants may be damaged, but not sunk by events).

**Events** include: attacks on unescorted merchants, submarine attacks on unescorted warships, air attacks against shipping and naval bases.

Merchant tonnage sunk during events count towards the tonnage tally of the war (see War Summary below).

Warships and submarines cannot be sunk by events, but they can be damaged. This damage is permanent until repaired in a port.

### (9) Return to Atlantic Map

## 2.3.4 Ports

Ports allow buying and releasing of ships as well as repair and rearming.

To open port management:

1) Tap a zone on the Atlantic Map to manage it.

2) If the zone has a port, tapping the zone again (gray circle in centre) will enter the port.  
OR

3) Tap the port icon at the bottom left. The port icon automatically appears whenever managing a zone that has a port for your faction.



Port Icon



Display Zone Names and Port Locations Icon

Tap the Display Zone Names and Port Locations Icon to determine which zones contain a port for your faction.

### Re-supply Vessels (Axis only)

When playing Axis (Germany), several zones contain re-supply vessels.

These zones are marked with a red tanker icon.

Moving any ship into such a zone will automatically replenish all shell and torpedo ammunition.



Re-supply Vessel icon



**Port View**

**(1) Ships in Zone**

Tap ships to highlight (yellow).

**(2) Ships currently being repaired and rearmed**

Tap ships to highlight (orange).

Status indicates the number of turns until work on the ship is complete.

Once complete the ship becomes active and is released back into the zone.

Bombing raids by enemy air forces can cause delays to repairs.

Number of turns required to repair/rearm based on ship size and damage amount.

**(3, 6) Examine ship statistics & damage for ships in zone or under repair.**

On the ship information panel:

>>> Examine next ship on list.

<<< Examine previous ship on list.

Tap anywhere on screen to exit ship information panel.

**(4) Select / Deselect All**

Toggle to select all or deselect all ships in zone of port.

**(5) Repair / Rearm Ships**

Sends highlighted ships (yellow) from the list of ships in zone to the repair list.

Tap ships in zone list (left) to toggle highlight.

Numbers indicate turns required for ships in repair list.

Ships are automatically released to the zone once repaired/rearmed.



**(7) Release ships from command.**

Removes any highlighted ships (yellow/orange) from command.  
Released ships can be re-purchased at a later time.

**(8) Shipyard**

Opens the shipyard to examine and purchase additional ships.  
See Shipyard [section 2.4](#) below for more details.

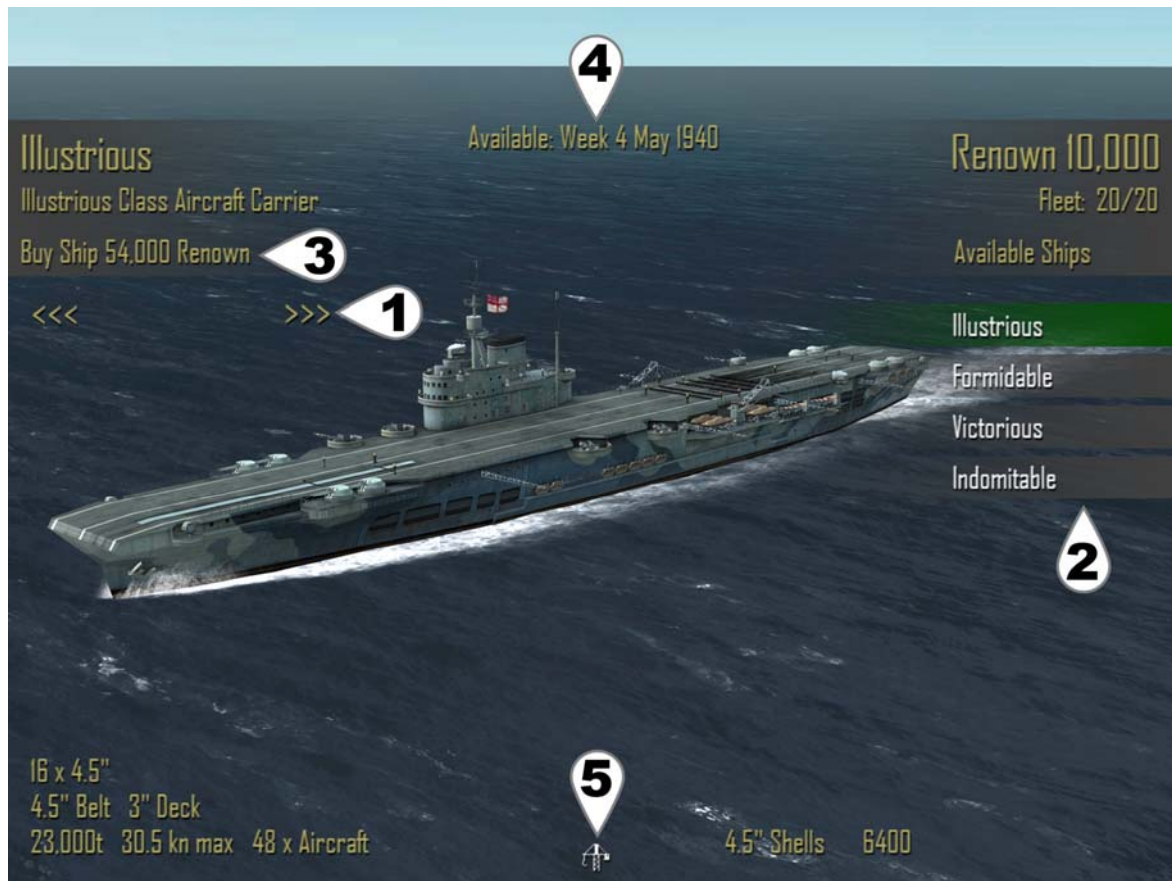
**(9) Return to zone management.**

## 2.4 Shipyard

Displays a view of the selected ship class, information about it and a list of available ships for that class.

To purchase a ship / add it to combat:

1. Tap <<< or >>> to move to desired ship class.
2. Tap the name of the individual ship on "Available Ships" list.
3. Tap Add Ship / Buy Ship for Renown.



### Shipyard View

In cases where there are over 50 members of a class, tap the ">>>" which appears next to "Available Ships" view them.



**(1) Next / Previous Ship Class**

**(2) Individual ships available for that class**

Tap highlight any ship (green).

**(3) Buy Ship**

**(4) Availability Date**

In Battle of the Atlantic mode, some ships are not available until a certain date.

**(5) Leave Shipyard**

Depending on the game mode being played, the following rules apply when using the Shipyard:

**Single Battle – CUSTOM Battle**

Adding a ship costs no Renown.

Any ship, including merchants may be added to the battle.

Duplicates of the same ship may be added.

**Campaign**

Purchasing a ship costs Renown.

Merchants cannot be purchased.

Already owned ships are not listed under available ships.

**Battle of the Atlantic**

Purchasing a ship costs Renown.

Merchants cannot be purchased.

Already owned or sunk ships are not listed under available ships.

Some ship classes are unavailable until a specific date.

**Battle of the Atlantic: Barracuda, Hedgehog and Squid Upgrades**

November 1942: Hedgehog available to Allied Destroyers and Flower/Temptress/Action Class Corvettes.

January 1943: Barracuda replace Swordfish bombers for Illustrious Class.

September 1943: Squid available to Allied Castle Class Corvettes.

These upgrades are added automatically to newly purchased ships.

Repair/Rearm to refit existing ships with these upgrades.

These upgrades are automatically installed on Campaign and CUSTOM BATTLE ships.

## 2.5 Ship Rank and Experience

Experience earned is equal to the displacement of any enemy ships sunk.

Experience earned is shared by all ships participating in the battle, including sunk ships.

All experience and rank is lost if ship is sunk.

Single Battles do not earn experience.

Battles not earning any Renown still generate experience for the participating ships.

### Experience Rank Display

The current rank of a ship can be seen when examining the Ship Details/Damage Report screen, see [section 1.3](#).

### Tons of shipping required per rank:

1	20,000
2	40,000
3	60,000
4	80,000
5	100,000

### Bonuses earned by rank:

Rank	1	2	3	4	5
Damage Reduction	2%	4%	6%	8%	10%
Extinguish Fires	2%	4%	6%	8%	10%
Magazine Explosion	-2%	-4%	-6%	-8%	-10%
Subsystem Repair	1%	2%	3%	4%	5%
Aircraft Durability	2%	4%	6%	8%	10%
Anti-Aircraft	2%	4%	6%	8%	10%

## **3 Single Battle: Historical Missions**

### **3.1 Sinking Courageous**

17 September 1939

While on anti-submarine patrol in the Western Approaches HMS Courageous is spotted and stalked by U-29.

Historical Outcome:

Courageous - Sunk

Withdrawal of carriers from anti-submarine patrols.

### **3.2 Action off Haisborough Sands**

7 December 1939

After a successful mine laying operation, two German destroyers turn towards home and encounter a Royal Navy patrol.

Historical Outcome:

Jersey - Heavy damage

### **3.3 Battle of the River Plate**

13 December 1939

Raiding the South Atlantic since the start of hostilities, the Graf Spee has finally been cornered by three cruisers.

Historical Outcome:

Graf Spee - Scuttled

Exeter - Heavy damage

Ajax - Medium damage

Achilles - Light damage

### **3.4 Sinking of Glowworm**

8 April 1940

The invasion of Norway is underway and sailing alone, HMS Glowworm encounters a destroyer and the Admiral Hipper.

Historical Outcome:

Glowworm - Sunk

Admiral Hipper - Medium Damage

### **3.5 Action off Lofoten**

9 April 1940

In poor weather, the twins Scharnhorst and Gneisenau come under attack from HMS Renown and her destroyer screen.

Historical Outcome:

Gneisenau - Medium damage

Renown - Light damage

### **3.6 Sinking the Glorious**

8 June 1940

The twins Scharnhorst and Gneisenau strike back when they encounter HMS Glorious and her escorts.

Historical Outcome:

Glorious - Sunk

Acasta - Sunk

Ardent - Sunk

Scharnhorst - Medium Damage

### **3.7 Hunt in the Western Approaches**

17 October 1940

German destroyers sortie out to hunt convoys off the coast of Brest. When spotted by a British air patrol, the convoys are diverted and Force F is rapidly mobilised to intercept.

Historical Outcome:

Z10 Hans Lody - Light damage

Z20 Karl Galster - Light damage

### **3.8 Convoy SC-7**

18/19 October 1940

Convoy SC-7 from Sydney to Liverpool suffers constant and coordinated wolf pack attacks during the crossing. On this night five u-boats close in.

Historical Outcome:

16 Merchants Sunk

### **3.9 Action off Plymouth**

29 November 1940

Operating out of Brest, German destroyers harass local shipping during night attacks. Spotting distant gun flashes a British patrol steams to investigate.

Historical Outcome:

Javelin - Heavy damage

### **3.10 Christmas Convoy**

25 December 1940

After successfully sneaking through the Denmark Strait, Hipper patrols convoy routes for two weeks without sighting a target. Her luck changes on Christmas Day when she encounters convoy WS5A containing troop ships headed for the Middle East.

Historical Outcome:  
Berwick - Heavy damage

### **3.11 Convoy HX-106**

8 February 1941

Scharnhorst and Gneisenau encounter convoy HX-106 from Halifax to Liverpool, but it is escorted by the battleship HMS Ramillies. The Germans have been ordered not to engage enemy capital ships.

Historical Outcome:  
German Ships - Disengage

### **3.12 Sinking Pinguin**

8 May 1941

At sea since 15 June 1940, the auxiliary cruiser Pinguin has been raiding and laying mines for a total 154,710 tons of enemy shipping sunk or captured. HMS Cornwall picks up the distress call from Pinguin's latest victim, "British Emperor", and steams north to investigate.

Historical Outcome:  
Pinguin - Sunk  
Cornwall - Medium damage

### **3.13 Battle of the Denmark Strait**

24 May 1941

Bismarck and Prinz Eugen are attempting to break through into the Atlantic to wreak havoc on allied shipping. Only HMS Hood and HMS Prince of Wales are in a position to intercept them.

Historical Outcome:  
Hood - Sunk  
Prince of Wales - Medium damage  
Bismarck - Light damage

### **3.14 Swordfish Attack Bismarck**

26 May 1941

HMS Sheffield shadows the Bismarck and with daylight fading and in almost impossibly bad weather, Swordfish bombers from the HMS Ark Royal launch their torpedo attack.

Historical Outcome:

Bismarck - Medium damage

Sheffield - Light damage

### **3.15 Bismarck Night Action**

26/27 May 1941

During the night British destroyers manage to detect and intercept the damaged Bismarck as she attempts to reach France for repairs.

Historical Outcome:

Cossack - Light damage

Zulu - Light damage

### **3.16 Sinking the Bismarck**

27 May 1941

Crippled and outnumbered, the Bismarck prepares for her final battle against impossible odds.

Historical Outcome:

Bismarck - Sunk

Rodney - Light damage

### **3.17 Sinking Atlantis**

22 November 1941

Atlantis has sunk 145,960 tons of merchant shipping since her raid began on March 31, 1940. While re-supplying U-126, the British cruiser HMS Devonshire closes in.

Historical Outcome:

Atlantis - Sunk

### **3.18 Kormoran versus Sydney**

19 November 1941

The auxiliary cruiser Kormoran is operating in the Indian Ocean and has sunk or captured 68,270 tons of allied shipping. Off the coast of Western Australia, HMAS Sydney investigates the Kormoran, currently posing as the Dutch merchant "Straat Malakka".

Historical Outcome:

Sydney - Sunk

Kormoran - Scuttled



### **3.19 Sinking of Barham**

25 November 1941

HMS Barham, Queen Elizabeth and Valiant, along with their destroyer escort, are underway near Alexandria when intercepted by U-331.

Historical Outcome:  
Barham - Sunk

### **3.20 Sinking Python**

1 December 1941

The re-supply ship Python is in the middle of refueling and re-supplying U-126 when HMS Dorsetshire appears.

Historical Outcome:  
Python - Scuttled

### **3.21 Convoy PQ-13**

29 March 1942

Arctic convoy PQ13 is en-route from Iceland to Murmansk, Russia when three German destroyers sail out to intercept.

Historical Outcome:  
Z26 - Sunk  
Trinidad - Heavy damage  
Eclipse - Heavy Damage  
Z25 - Light damage

### **3.22 Escorting Edinburgh**

2 May 1942

While escorting convoy QP11, HMS Edinburgh (carrying 4.5 tons of Soviet gold) is hit by two torpedoes from U-456. Crippled and under tow, Edinburgh comes under attack from destroyers two days later.

Historical Outcome:  
Edinburgh - Sunk  
Z7 Hermann Schoemann - Sunk  
Foresight - Heavy damage  
Forester - Heavy damage  
Z25 - Medium Damage

### **3.23 Battle of the Barents Sea**

31 December 1942

Convoy JW51B is sailing to Kola Inlet when intercepted by multiple German forces.

Historical Outcome:

Achates - Sunk

Z16 Friedrich Eckoldt - Sunk

Onslow - Heavy damage

Admiral Hipper - Heavy damage

Obdurate - Light damage

Obedient - Light damage

### **3.24 Convoy TM-1**

9 January 1943

Convoy TM1 consisting of tankers sailing from Trinidad to Gibraltar is attacked by wolf packs.

Historical Outcome:

7 Tankers Sunk

### **3.25 Les Sept Iles**

23 October 1943

The blockade runner Munsterland and her escorts sail out from Brest.

Historical Outcome:

Charybdis - Sunk

### **3.26 Battle of the North Cape**

26 December 1943

Scharnhorst and her escort are searching for arctic convoys to attack. After sending her escort south to scout, the now alone Scharnhorst is cornered by two British forces.

Historical Outcome:

Scharnhorst - Sunk

Norfolk - Medium damage

Duke of York - Light damage

### **3.27 Ile de Batz**

26 April 1944

After laying mines in the English Channel, three torpedo boats are intercepted by an Allied patrol.

Historical Outcome:

T29 - Sunk

Ashanti - Medium damage

Huron - Light damage

Athabaskan - Light damage

Haida - Light damage

T24 - Light damage

T27 Light damage

### **3.28 Ile de Vierge**

28 April 1944

After protecting a mine laying operation in the English Channel, Allied escorts detect enemy contacts.

Historical Outcome:

Athabaskan - Sunk

T27 Sunk

T24 Light damage

### **3.29 Action off Brittany**

9 June 1944

An allied patrol intercepts enemy ships in the English Channel.

Historical Outcome:

Z32 - Sunk

Tartar - Medium damage

Z24 - Medium damage

Eskimo - Light damage

Haida - Light damage

### **3.30 Action off Bergen**

28 January 1945

The 4th flotilla has been ordered to vacate the arctic. Allied intelligence intercepts these orders and two light cruisers are sent to intercept.

Historical Outcome:

Z31 - Medium damage

Diadem - Light damage

Mauritius - Light damage

Z34 - Light damage

Z38 - Light damage.

## 4 Game Options / Help

Game Options can be accessed from the Main Menu by tapping on "Options / Help". In addition, they can be accessed via the Special Commands Menu of the Tactical Map see [section 1.4.2](#).

Here you can adjust sound and music volume, camera sensitivity as well as various difficulty and realism settings.

In addition, the Help section can be accessed from the Options page and contains 12 chapters describing the various aspects of the game.



### Options Page

By default, all options are off. Turning them on makes the following changes:

#### **Longer Start Range**

Increases starting distances by approximately 20%.

#### **Limited Visibility**

Based on weather and time of day, you can only see so far. Ships outside this range will be RADAR contacts (or sonar) and can't be seen in the 3D world.

Typical ranges are from ~6000yd at night to ~40,000yd on a clear day.

#### **Enemy Ships Can Disengage**

Enables enemy ships to lay smoke and attempt to retreat from combat if too heavily damaged.

**No Enemy Damage Report**

Tapping an enemy ship will give you the name and statistics, but not tell you which subsystems are currently damaged or destroyed.

**50% Renown Earned**

When playing a Campaign or Battle of the Atlantic, only half the Renown points are earned.

**Historical Ships Only**

Removes the Lion and H-39 classes from the shipyard as these ships were designed, but were never completed.

In Campaign mode the enemy will always use these ships in the hardest zones and ships purchased before changing this option will remain in the player fleet.

In Battle of the Atlantic mode, the AI will not purchase these ships, however ships already purchased by the player or AI before changing this option will remain in play.

In earlier game versions these classes were unlocked by winning the Campaign and Battle of the Atlantic game modes.

**Dud Weapons**

Approximately 4% of all shells, torpedoes and bombs do not explode on impact.

**Wind Affects Player Shells**

Shells fired by player ships now drift in the direction of the wind. Both direction and strength of the wind must now be manually compensated for by the player.

**Enemy Accuracy: Normal (Elite)**

Increases the accuracy of enemy gunfire, torpedo and aircraft attacks.

**Battle of the Atlantic Options:****Difficulty: Normal (Hard)**

Increases the number of enemy ships on the map and increases the amount of merchant tonnage sunk by events (decreases event merchant tonnage if playing Germany).

**Sunk Ships Recycled by Enemy**

Allows the enemy to resurrect sunk ships and eventually put them back into battle. This is particularly useful for increasing the difficulty when playing the Royal Navy to compensate for the lower number of German ships available.

**30 (20) Player Ships**

Player fleet size is 30 by default. Turning this option on reduces it to 20 for a more challenging game. Changing this setting during a game makes it possible to have more than the allowed number of ships, however new ships cannot be purchased unless below the current maximum fleet size.

**Graphics Settings:****Zoom Buttons: OFF (ON)**

Turning this on adds two buttons to the combat interface in order to zoom the camera in and out. Helpful for devices that do not support pinching.

**Ocean: Detailed (Simple)**

Toggles the ocean complexity between the detailed wave surface to a simplified plane. May improve performance on some lower-end devices. Does not affect the title page and requires a battle restart.

**Underwater: Detailed (Simple)**

Toggles the underwater graphics to turn on/off light shafts, caustic effects and particles. May improve performance on some lower-end devices. Requires a battle restart.

# 5 Appendices

## 5.1 FAQ

### 1. Ships just disappear in combat! How am I supposed to sink them?

Ships can leave combat if they meet the Disengage criteria, see [section 1.4.1](#).

The ability for the enemy to disengage adds an additional challenge. If you want to drive off an enemy, you can. If you want to sink an enemy, you will need to deliberately target the propulsion systems to prevent it from escaping. Shots that you might have otherwise just targeted the magazines with...

### 2. Gunnery is too hard! Why is it so difficult to land hits?

The Target Solution is only an estimate, it can often be wrong so just use it as a guide. Be sure to use the Splash History ([section 1.1.3](#)) and Tactical Map Shot History ([section 1.2](#)). They are powerful tools that can give you a lot of information about how to plan your next shot.

Using the Splash History can land hits about 75% of the time. It tells you whether the last elevation you fired at will be long, short or on target this turn. Adjusting elevation 1.5 to 2 degrees is usually enough to bring the shot into the next category and once in the "green zone" only minimal adjustments should be necessary.

### 3. Where are the ship upgrades like Pacific Fleet had?

Instead of upgrades, there are now hundreds of ships to choose from and you now have to replace ships as they are lost giving the opportunity to buy new ships that suit your needs. Want a destroyer with good guns? Buy a Tribal. Want a destroyer with excellent torpedoes? Buy a J,K,N Class. A few automatic upgrades occur during the Battle of the Atlantic for Hedgehog, Squid and Barracuda dive bombers.

### 4. When is a game saved so that I can leave and resume later?

**Single Battle:** never.

**Campaign:** after each battle and after purchasing or releasing any ships.

**Battle of the Atlantic:** after each battle, after purchasing or releasing any ships and at the end of each campaign turn.

### 5. Why are torpedo bombers so hard to use? The enemy just sails past aerial torpedoes...

Aerial torpedoes usually run over several turns to their target. This means you don't have to get too close to the enemy ship before dropping (although allied torpedoes do have a fairly short range).

Most importantly make sure to set the aircraft attack marker 0.5-1.5 ship lengths in front of the target so it sails into the torpedo. Remember you can adjust both the angle of the attack and the point along the ship's path you wish to strike, see [section 1.1.5](#).

### 6. Depth Charges and Hedgehogs do nothing, how do they work?

Tap the FIRE button to launch an anti-submarine attack.

### 7. Why are Campaigns so easy, I have lots of Renown and nothing to spend it on?

Save it! The later levels become very difficult and you will need it to replace lost ships. It is possible to lose a campaign due to being unable to replace your ships.

Still too easy? There's an option to reduce Renown rewards by 50% for both Campaign and Battle of the Atlantic modes.



**8. Why don't I earn Renown for sinking ships in the Campaign?**

Renown is earned only when the score is higher than any other previous attempt for that mission. In cases where a previous high score exists, only the difference of the current higher score and the previous score is earned.

**9. Why don't I earn Renown for sinking ships in Battle of the Atlantic?**

Renown is earned only for enemy warships and submarines sunk, not merchants. Merchant tonnage instead goes to the War Summary tally and is used to determine how the war is progressing, see [section 2.3.2](#).

**10. Why do aircraft attack my own ships? Why is the aircraft attack marker on my ship?**

By default the aircraft attack marker initially appears on the ship launching the attack.

If your ship already has a target, simply tap the Target Solution.

OR

Go into the Tactical Map, tap a target then tap the Go To Ship button to target any ship.

**11. Why won't ships sink? I've hit them so many times...**

Atlantic Fleet does not use hit points, but actual buoyancy physics. This means you have to hit the ship near the water line in order for water to flood it. Multiple hits away from the waterline cause damage, but cause very little flooding.

Also be aware of counter flooding. Try to avoid hitting a ship on both sides or at both ends. Concentrate on one side or one end to capsize it or force the ship under.

Use the right tool for the job. Small calibre guns or HE shells won't penetrate heavy armour.

Finally distance plays a major role in armour penetration. At long range you want to plunge your shells into the deck rather than have them glance the belt. Belt armour penetration decreases with longer distances, while deck armour penetration increases and vice versa.

**12. Why do torpedoes or shells pass through ships?**

There is no "friendly fire".

**13. Why can't I progress in my Battle of the Atlantic Campaign I keep getting the same screen every time I press "Next"?**

The ending criteria have been met for that campaign and it is finished, see [section 2.3.2](#).

## 5.2 Data

### 5.2.1 Torpedoes

Arming distance: ~1000 yd

Note that under this distance, a torpedo will not arm and be a dud.

Torpedo data below indicates torpedo type, speed in knots, maximum range in yards and the approximate yards traveled per turn.

#### Royal Navy:

Aerial	18" Mark XIV	33kn	3500 yd	1060 yd/turn
Surface	21" Mark IX	35kn	14,000 yd	4000 yd/turn
Submarine	21" Mark VII / VIII	41kn	7,000 yd	1707 yd/turn

#### Kriegsmarine:

Aerial	H6	24kn	6500 yd	2708 yd/turn
Surface	G7a	30kn	15,000 yd	5000 yd/turn
Submarine	G7a	30kn	15,000 yd	5000 yd/turn

### 5.2.2 Aircraft & Payloads

#### Land Based Aircraft:

Lancaster:	1 x 14,000 lb Grand Slam bomb
Liberator:	6 x 500 lb Bomb
Liberator:	6 x Depth Charges
Liberator:	8 x FFAR
Liberator (US):	6 x 500 lb Bomb
Liberator (US):	6 x Depth Charges
Sunderland:	6 x 500 lb Bomb
Sunderland:	6 x Depth Charges
Fw200 Condor:	10 x 500 lb Bomb
Fw200 Condor:	2 x Hs293 (homing glide bomb)
Dornier Do217:	1 x Torpedo
Dornier Do217:	6 x 500 lb Bomb
Dornier Do217:	2 x Hs293 (homing glide bomb)
Dornier Do217:	1 x FritzX (homing glide bomb, armour piercing)
Ju87 Stuka:	1 x 500 lb, 4 x 100 lb

All fighter aircraft DIVE then ATTACK.

The Ju87 Stuka and Barracuda are very steep actual "dive bombers", while the other aircraft have shallow dives.

All land based heavy bombers level bomb with the following exceptions:

Allied rocket attacks: shallow dive then rocket.

Dornier with bombs: shallow dive then bomb.

### Carrier based Aircraft:

Avenger (US):	4 x 500 lb bomb
Avenger (US):	4 x Depth charge
Avenger (US):	8 x FFAR
Barracuda:	1 x Torpedo
Barracuda:	6 x 250 lb bomb
Barracuda:	4 x Depth Charges
Seafire:	(none) can strafe ships with guns
Seafire:	3 x 250 lb Bomb
Swordfish:	1 x Torpedo
Swordfish:	3 x 500 lb Bomb
Swordfish:	4 x Depth Charges
Swordfish:	8 x FFAR
Wildcat (US):	(none) can strafe ships with guns
Wildcat (US):	3 x 250 lb Bomb

Barracuda replaces Swordfish in January 1943 for the Illustrious Class Aircraft Carrier only and is a full dive bomber as opposed to shallow dive of the Swordfish.

Carrier aircraft (fighters) with "none" payload act as a Combat Air Patrol.  
They are best at shooting down incoming enemy aircraft.  
Can still be used in strafing attacks.

### 5.2.3 Ship Repair Times

Table shows the number of turns required to repair/rearm ships of various sizes with various damage amounts.

<b>Damage:</b>	None	Light	Medium	Heavy
<b>Small</b> SS, DD, TB, DC	1	2	3	4
<b>Medium</b> CL, CVE, HK	2	4	6	8
<b>Large</b> CA	3	6	9	12
<b>Very Large</b> BB, BC, CV	4	8	12	16

## 5.3 Glossary & Abbreviations

AAA	Anti-Aircraft Armament
AP	Armour-Piercing shell, best used against armour thickness > 50% shell calibre
ASW	Anti-Submarine Warfare
BB	Battleship
BC	Battlecruiser
BotA	Battle of the Atlantic
CAP	Combat Air Patrol, carrier-based fighters constantly in the air vs. enemy aircraft
CA	Heavy Cruiser
CL	Light Cruiser
CV	Aircraft Carrier
CVE	Escort Carrier
DC	Corvette
DD	Destroyer
Dud	Not exploding shell, bomb or torpedo warhead
Elev	Elevation (Target Solution suggested gun elevation to hit target)
FFAR	Forward Firing Aircraft Rocket
HE	High-Explosive shell, best used against lightly or unarmoured targets
HH	Hedgehog, forward firing anti-submarine mortar
HK	Hilfskreuzer, German auxiliary cruiser / merchant raider
KM	Kriegsmarine, German navy
Kn	Knot, unit of nautical speed
MS	Merchant Ship
lb	Pound, unit of weight
RN	Royal Navy
SS	Submarine, U-boat (German submarine)
t	Tons of water displaced (also called displacement or tonnage of a ship)
TB	Torpedo Boat
TDC	Torpedo Data Computer
Torp.	Torpedo Bearing (Target Solution suggested bearing to fire torpedo)
TT	Torpedo Tubes, either launcher or torpedo room
yd	Yard, unit of length

## 5.4 Credits

### **Programming and Design**

Paul Sincock Ph.D.

### **Artwork and Design**

Nils Dücker

### **2D Art and Visual Effects**

Przemek Starkiewicz

### **Additional Art**

Olof Kjolstad

### **Music Composed by**

Aleksi Aubry-Carlson

### **Sound Effects**

Tapio Liukkonen

### **Technical Assistance by**

Mark Hessburg from Wolves of the Atlantic

<http://www.wolves-of-the-atlantic.com/>

### **Special Thanks to**

Michael 'Rayydar' Allers

Chris Amundson

## 5.5 Contact Us

Need help, want to chat with other players or provide feedback?

Visit us at:

<http://killerfishgames.com/>

<https://www.facebook.com/pages/Killerfish-Games/297301143813883>

<https://www.youtube.com/user/PacificFleetDev>

© 2015 Killerfish Games  
Atlantic Fleet is not "Free Software".  
Support quality games by purchasing them.

## 5.6 Release Notes

### Version 1.10

North Carolina secondary guns no longer crash game when firing starboard.  
Hedgehogs enabled in Anti-Submarine Training.  
Reverted damage model to make ships harder to sink.  
H-39 and Lion Class now unlocked by default.  
Removed Lion/H-39 unlock messages.  
New option "Historical Ships Only" disables H-39 and Lion classes.  
Type XXI submarines now work in BotA encounters, rather than crash.  
Type XXI names now appear correctly in ship summary pages.  
Type XXI displays correct stats (rather than Type IX's stats).  
Ships now fully capsize.  
Enemy ships automatically disengage if >40,000 yards distant.  
Enemy no longer wastes torpedo spreads against surfaced player submarines.  
Enemy AI improved when disengaging.  
BotA games now correctly recruit North Carolina and Type XXI classes.  
Invasion of Norway/France events now always display correctly.  
Enemy carriers now always launch correct aircraft type.  
Sunderland bomber gun graphic added.  
Fixed damage decals on hulls for many DD's and TB.  
Added aircraft models to some ships.  
Corrected aircraft numbers carried by ships.  
Legacy "Ohka" action removed.  
Axis air cover over Scapa Flow shortened in BotA.  
Fixed typo in BotA win screen.  
Sonar on German destroyers now displayed in damage reports.

### Version 1.09

#### Missions:

Escorting Edinburgh speed bug fixed.  
Elbing Class TB no longer crash mission startup in Single, Chain and BotA.  
Can no longer disable AI in Training Missions.  
Ile de Batz mission now has correct KM ships.  
Merchant auto-sink removed from Single/Chain mode.  
Fixed duplicated ship instance roster objects in shipyard.  
Fixed Custom Battle ship locations when submarines and ships are together.

#### Combat:

KM depth charges now apply damage.  
Aircraft now reveal submerged sub positions to all ships.  
Aerial depth charges no longer break turn cycle.  
>16 aerial torpedoes fired no longer breaks turn cycle.  
Fine tune toggle added.  
Enemy no longer subtracts 2 torpedoes per one fired.  
AI torpedo spreads limited to 4.  
Wolf pack submarines don't disengage prematurely.  
AI no longer targets sunk ships.  
AI submarines attempt to leave combat if >15kyd to nearest ship.  
Submarines now attempt to disengage if no torpedoes on board.  
Disengage by enemy disabled by default, 25kyd option still available.  
Flight deck damage notices removed.  
Fixed visible ships in binocular view that were beyond visual range.  
Decreased distance to un-stick collided vessels.  
Collided vessels no longer forced to reverse.  
Torpedoes have higher chance to knock out propellers and rudder.  
Sonar information passed to all ships in zone.

Smoothed bomb drops by allied aircraft.  
Torpedo bombers now correctly avoid ships.  
Plane crash splash effect audio and self destroy added.  
AI can no longer disengage in fleet movement mode and break turn cycle.  
Air attacks no longer break turn cycle.  
AI firing torpedo immediately after an aerial torpedo no longer breaks turn cycle.  
Fixed aircraft GUI bars and display/text alignment.  
Sunk escorts (or sonar knocked out) no longer report sonar data.  
Surfaced u-boats no longer immediately attempt to disengage.  
AI Stuka accuracy fixed.  
AI now scuttles ships in combat so as not to draw out battles.  
Small calibre guns no longer knock out heavily armoured turrets.  
Target Solution now uses Splash History data to be more logical.  
Fixed Barracuda depth charges.  
Removed rockets option for Barracudas.  
Fixed aerial depth charge timer destroying 2 charges on initial drop.  
Submarines below periscope depth considered not in combat for Withdrawing.  
Torpedo mark line management.  
Improved target solution logic requires intact sensors.  
Torpedoes striking ship at end of run now apply damage.  
MS cannot auto-kill other MS.  
Surfaced submarines not as resilient.

#### **Ship Fixes:**

Illustrious turrets set up correctly.  
Added magazine explosions to carriers.  
1936B gun crews added.  
Town main director added.  
Dido corrected aircraft to 0.  
Renamed Leander class ships sold to Australia.  
Renamed C class DDs sold to Canada.  
Schanrhurst secondary gun orientation fixed.  
Deutschland secondary gun orientation fixed.  
B Class initial torpedo loads fixed.  
Bogue/Attacker damage meshes fixed.  
H39 unlock fixed.  
Doubled size of air wings (CV 8, CVE 4).  
Duplicate of U852 in ship lists fixed.  
Renown belt increased to 9".  
Queen Elizabeth tonnage upped to 32,000.  
Queen Elizabeth and Revenge costs swapped.  
Type VII gun calibre corrected to 3.5"  
Crown Colony B turret destroyed decal fixed.  
Bogue/Attacker crew mesh fixed.  
1934 and 1936A gun turrets fixed on damage reports.  
E,F Class gun crews fixed.  
E,F, G,H, O,P Class torpedo tubes corrected.  
Renown aft director mesh fixed.  
Renamed V Class DD Vimy to Vancouver.  
Carrier flight decks more resilient.  
Fixed Barracuda air wings and aircraft.  
Troopship mesh fixed.  
Freighter mesh fixed.  
County deck LODs.  
Leipzig damage mesh fixed.  
Hood hull2 LOD fixed.  
Illustrious deck LODs fixed.  
Dido meshes fixed.  
1934, 1934A trans meshes corrected.

Lion sprite collider resized.  
North Carolina added.  
Type XXI added.

**Options:**

Manual Zoom buttons added.  
Music in combat added.

**Campaign & Battle of the Atlantic:**

Added empty stars for each campaign level.  
Newly purchased ships now displayed correctly in zone.  
Can purchase own start ships when starting a campaign.  
Option for player fleet size 30 or 20.  
Submarines damaged in previous combat no longer immediately disengage.  
Unescorted merchants auto-sunk when withdrawing from combat.  
Land based aircraft now work in Campaigns and BotA.  
Barracuda added to mission 30+ of campaign.  
Barracuda available Jan 1943 in BotA games (refit to add to existing carriers).  
List of all ships sunk available in War Summary.  
BotA persistent data errors fixed.  
BotA submarines get initiative.  
BotA submarines in area pass initiative to surface ships (due to scouting).  
BotA Allies get initiative over submarines (50%) after May 1943.  
BotA Repaired KM ships would now checked for encounters.  
BotA RN ships now seek out repairs.

**Version 1.07**

**General:**

Fixed crash on startup for Galaxy S3 and a few other devices.  
Training Missions: Added 7 training mission tutorials to teach the basics of the game.  
Improved button sensitivity for some devices.  
New options for simple ocean and underwater graphics.  
Fixed several audio sources not using volume setting: ship sinking sounds, fires, star shells, lightning/thunder.

**Game Modes:**

Custom Battle: can now select land based aircraft and payload.  
Fixed typo in briefing 25.  
Campaign: if have 10 ships in fleet, tapping shipyard button now takes you to the shipyard, but throws an error if you try to purchase more ships.  
Force AI on for campaign and BotA to prevent data corruption and player controlling both sides in these modes.  
Game now saves after each BotA battle.  
Added "BotA Over" message when meeting the end game criteria in BotA mode.  
Increased tonnage sunk in events when playing German BotA games.  
Increased frequency of encounters in early war months.  
Corrected BotA ammo amounts after battle to account for ammo still in loaded guns/torpedo tubes.  
BotA Persistent Data overhauled, ensured damage, subsystems KO'ed and ammo are persistent across battles, when viewed in ship info panels as well as reapplied in next combat.  
Added new condition to BotA campaign end: threshold of 150k of KM naval tons must be also sunk for Allies to win.

**Shipyard:**

Fixed a bug which broke the Shipyard in Custom Battles.  
Tapping through shipyard ships can no longer increase brightness of ships.  
Can no longer buy ships before their availability dates in BotA.  
Can no longer purchase multiples of the same ship in BotA/Campaigns once all ships in class were bought.



**Ships:**

Fixed Atlantis name displaying as Pinguin.  
Scharnhorst damage report now shows secondary guns.  
Added damage decals to Renown turrets.  
Modified Bismarck, Scharnhorst and Tribal turret train angles.  
Removed sonar from Revenge class damage report.  
Modified Bismarck, Scharnhorst and H39 buoyancy parameters making them easier to sink.  
Turn radius increased for larger ships.  
Decreased Torpedo Defense System efficiency to 70%.  
Bismarck turret armour display changed from 17 to 14".  
Removed sonar and depth charges from Elbing Class TB.  
Fixed typo in Deutschland class for secondary guns.  
Scharnhorst secondary guns now displayed correctly.  
Fixed gun train angles on HK classes.

**Combat:**

Touching the bearing adjustment while marking a torpedo direction now works.  
Firing a torpedo too deep and getting error no longer subtracts that torpedo.  
Glide bombs (Hs293 and Fritz X) with no Target Solution no longer break the game.  
Anti-aircraft now decreases as ship takes damage.  
Fixed glitch where Bogue Fighter (none) launch, generated a swordfish up high.  
Put "floating" bombs back inside avenger with bomb load out.  
German torpedo bombers can no longer fly through ships.  
Fixed a bug where wind was not applied to dropped aircraft ordnance.  
Targeting a ship by tapping Solution in top right now displays the air attack marker over it correctly.  
Increased bomb damage ~20%.  
Increased size of sonar/submerged target markers.  
Greatly decreased submerged submarine damage by gunfire.  
Decreased submarine flood rate to decrease sudden movements on sinking.  
Squid now correctly damages submerged submarines.  
Torpedo hits no longer damage ship superstructure.  
Corrected torpedo damage to smaller vessels.  
Improved conditions for AI and player submarines to leave combat.  
Ramming submarines does less damage to the surface vessel.  
AI submarines dive sooner when escorts approach.  
Anti-submarine weapons now have FIRE button instead of DONE.  
Fixed AI carriers launching planes when heavily damaged/on fire.  
Ships that can launch an air attack now see submerged vessels as "Submerged Contacts" on Tactical Map. These contacts do not generate a Target Solution and Deep and Very Deep vessels cannot be spotted in this manner.  
Decreased overall AAA efficiency by ~30%.  
AAA damage now based on superstructure only, not entire ship.  
Fixed several cases where canceling aircraft could increment number of aircraft in air by 1.  
Decreased aircraft attack run length ~25%.  
Carriers more resilient to having flight deck knocked out.  
Fixed Sunderland depth charge timing could break turn cycle.  
Chance for fires increased and always happen after secondary explosions.  
Widened the bearing line for better visibility.  
Normalised turn radii for Fleet mode so recent turn radii edit no longer causes smaller ships to turn harder and break the formation.  
Can now lay smoke with all ships using Fleet movement mode.  
Ships now use secondary batteries correctly.  
Improved AI decision making for disengaging.  
Improved AI target selection.  
Modified KM and RN disengage parameters. KM flees sooner than RN.  
Removed enemy AI maneuvering at battle start, AI is on immediately and fires/attacks from the first turn.